

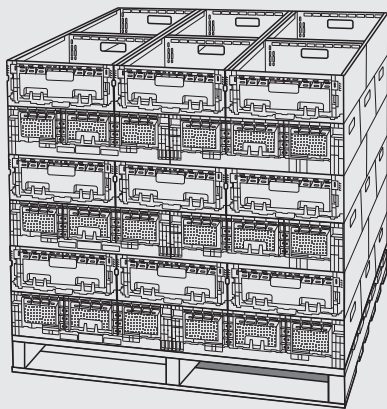
# VPS Intellicrate®

## Stacking for Transportation

Each inbound pallet of crates sent to Woolworths **must be made safe, stable and secure**. The items contained in this document are recommendations as a starting point towards stable and secure loads. Ensuring safe, stable and secure loads remains the responsibility of the sender.



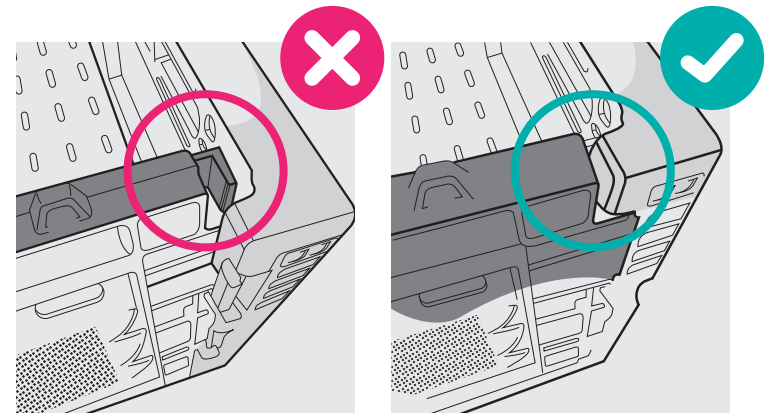
### PACKING FOR TRANSPORTATION



#### Cross Stacking

Where possible crates should be cross stacked to ensure maximum stability. Each alternative layer of crates stacked in opposite directions for the total height of the pallet.

DO NOT ALLOW CRATES TO OVERHANG THE PALLET AS THIS COULD LEAD TO SAFETY ISSUES IN THE SUPPLY CHAIN. CRATES MUST BE ALIGNED ON PALLET.

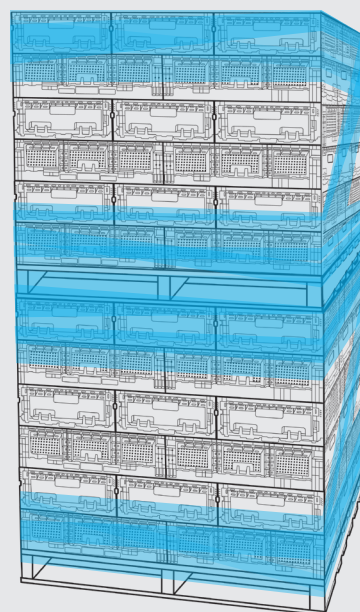
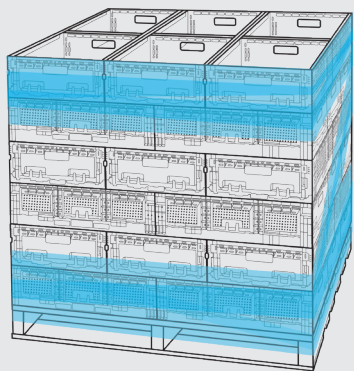


#### Crates fully assembled and aligned

Ensure all crate latches are fully engaged and crate correctly interlocked with adjacent layers.



### WRAPPING FOR TRANSPORTATION



#### Wrapping for transportation

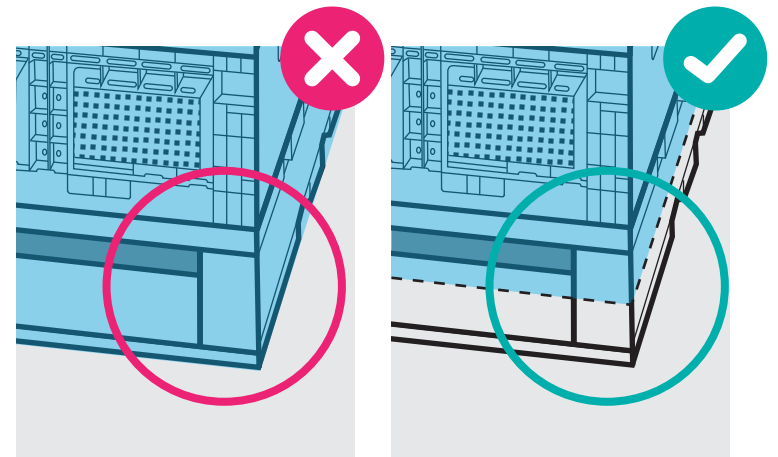
Two top crate layers must be secured with restraining material\*. Two bottom crate layers must be secured to the pallet with restraining material. When double stacking, sandwich pallet must be secured to adjacent crate layers.

\*Metal or plastic strapping (commonly used with a crimp or buckle) is not permitted

If using clear plastic stretch wrap the following recommendations apply:

- A minimum of two layers of material is used for top and bottom crates (if double stacked use three layers for sandwich pallet)
- Film material no less than 20µm thick is proven to achieve better results

The number of wrap passes are recommendations as a starting point. Ensuring safe, stable and secure loads remains the responsibility of the sender.



#### Wrapping Coverage of Pallet

The stretch wrap must be secured to the top half of the actual wooden pallet.

DO NOT STRETCH WRAP TO THE BOTTOM OF THE PALLET. THIS COULD LEAD TO SAFETY ISSUES IN THE SUPPLY CHAIN.

#### SAFE LOAD LIMITS

Standard crate weight limit 16kg. Maximum Pallet weight limit 1100kg inclusive of the pallet itself.

| SIZE        | LENGTH | WIDTH | HEIGHT  | 1.8m Single Pallet |    | 1.2m Max - Double Stacked 2.4m Max |    |
|-------------|--------|-------|---------|--------------------|----|------------------------------------|----|
|             |        |       |         | TI                 | HI | TI                                 | HI |
| 27L F Crate | 578mm  | 385mm | 142.5mm | 6                  | 11 | 6                                  | 7  |
| 33L B Crate | 578mm  | 385mm | 172.5mm | 6                  | 9  | 6                                  | 6  |
| 41L C Crate | 578mm  | 385mm | 210.5mm | 6                  | 8  | 6                                  | 5  |